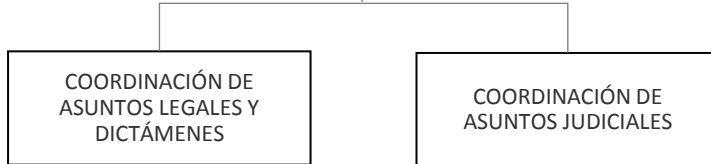


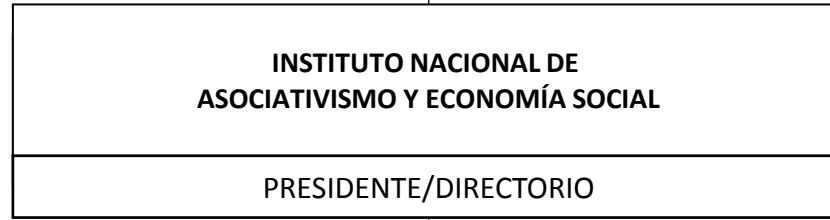
D
N
-
D
G



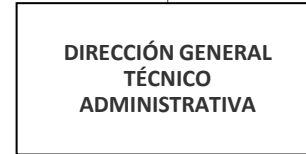
D
I
R
E
C
C
I
Ó
N



C
O
O
R
D
I
N
A
C
I
Ó
N



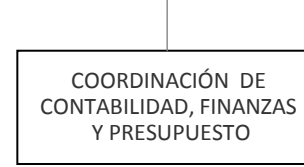
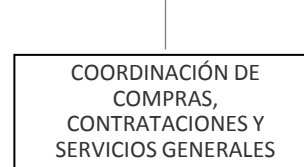
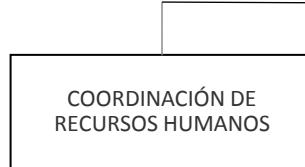
D
N
-
D
G

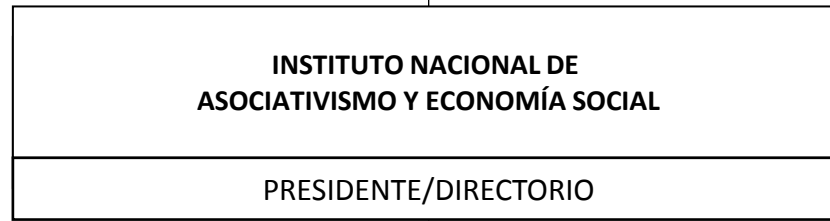


D
I
R
E
C
C
I
Ó
N

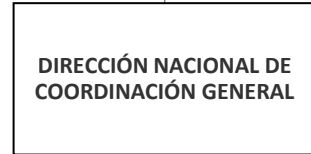


C
O
O
R
D
I
N
A
C
I
Ó
N

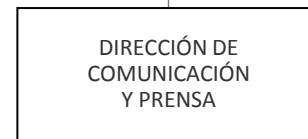
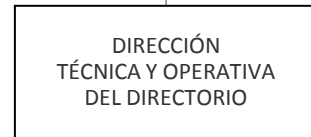
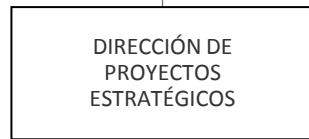




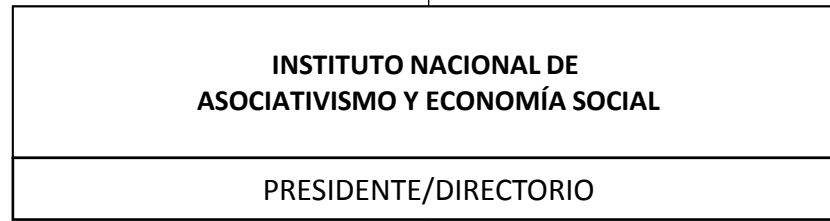
D
N
-
D
G



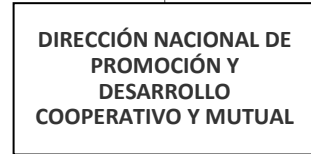
D
I
R
E
C
C
I
Ó
N



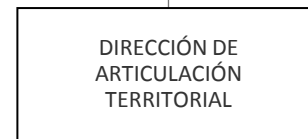
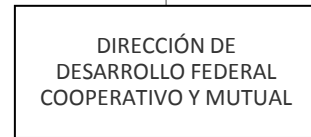
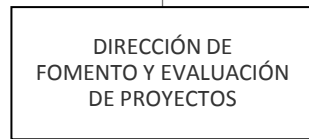
C
O
O
R
D
I
N
A
C
I
Ó
N



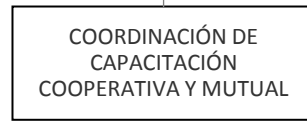
D
N
-
D
G

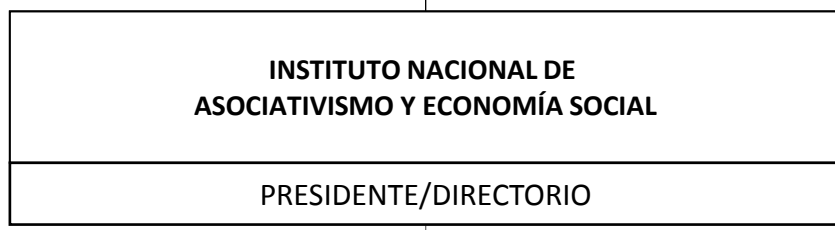


D
I
R
E
C
C
I
Ó
N

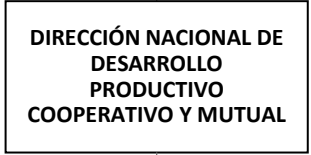


C
O
O
R
D
I
N
A
C
I
Ó
N

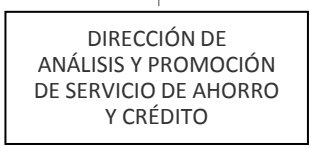




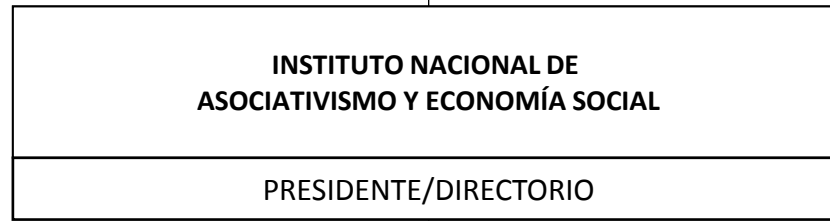
D
N
-
D
G



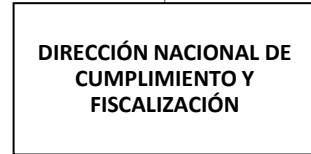
D
I
R
E
C
C
I
Ó
N



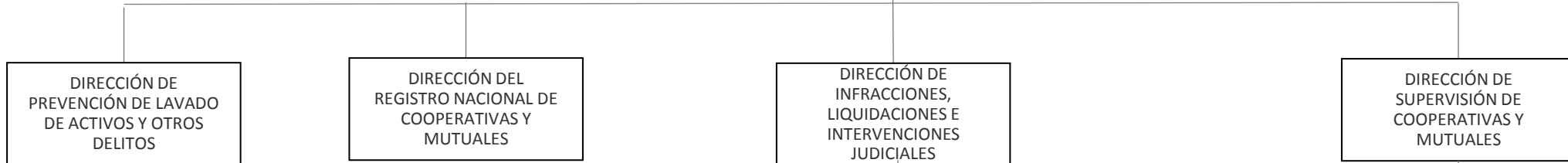
C
O
R
D
I
N
A
C
I
Ó
N



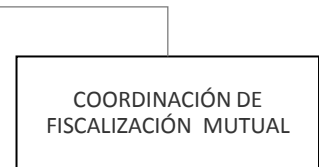
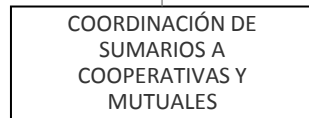
D
N
-
D
G

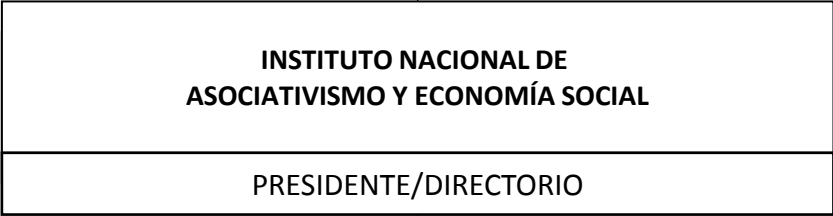


D
I
R
E
C
C
I
Ó
N



C
O
O
R
D
I
N
A
C
I
Ó
N





D
N
-
D
G

D
I
R
E
C
C
I
Ó
N

C
O
R
D
I
N
A
C
I
Ó
N



República Argentina - Poder Ejecutivo Nacional
2021 - Año de Homenaje al Premio Nobel de Medicina Dr. César Milstein

Hoja Adicional de Firmas
Anexo

Número:

Referencia: Anexo III INAES - EX-2021-74181801- -APN-MGESYA#INAES

El documento fue importado por el sistema GEDO con un total de 8 pagina/s.